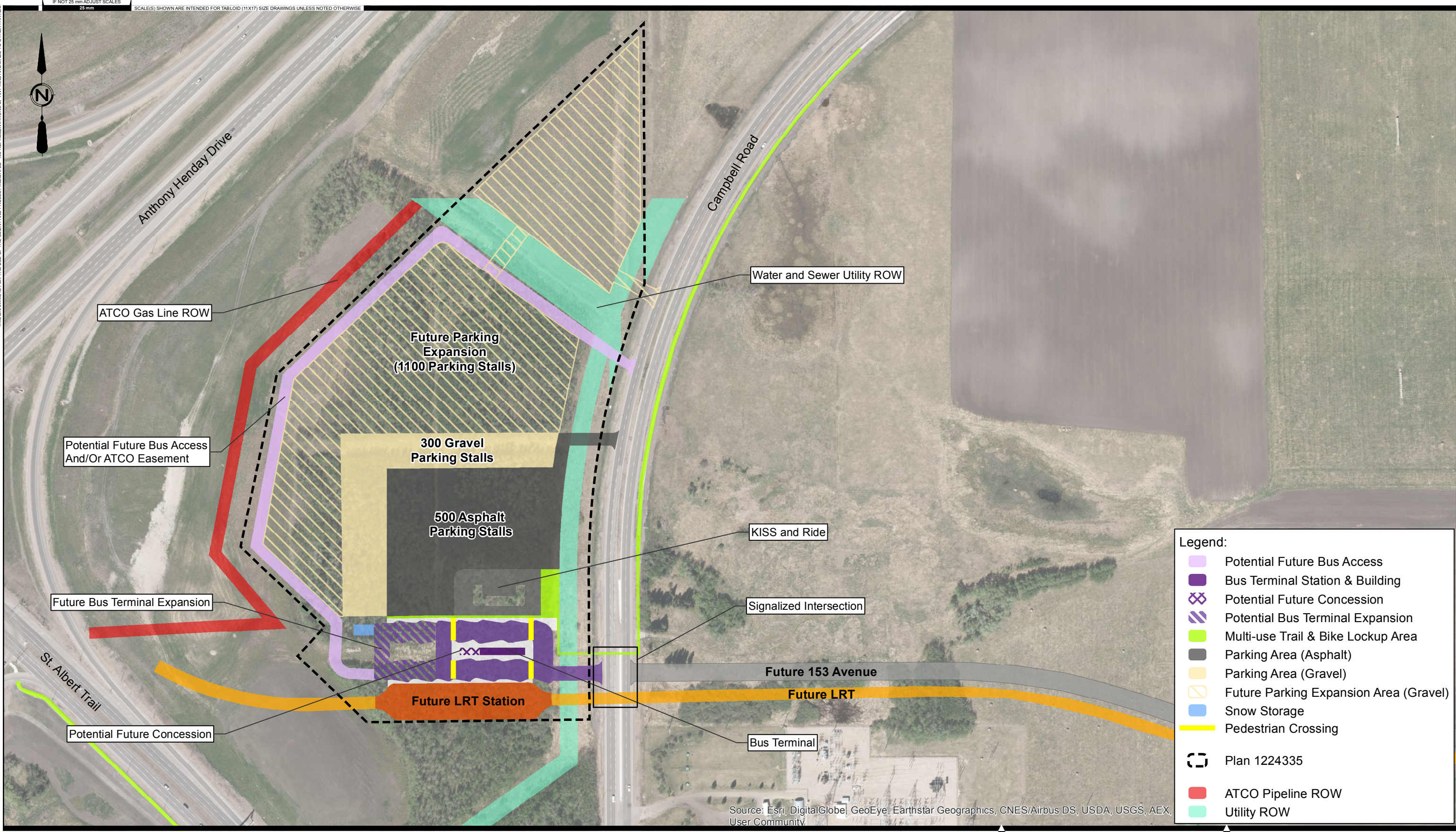


THIS DRAWING IS FOR THE USE OF THE CLIENT AND PROJECT INDICATED - NO REPRESENTATIONS OF ANY KIND ARE MADE TO OTHER PARTIES

P:\2016\3726\00_Campbell_Rd_Park\Working_Dwgs\010_GIS\Figure3_ParkingB.mxd
DATE: 3/23/2017, Stephanie Tik



Legend:

- Potential Future Bus Access
- Bus Terminal Station & Building
- Potential Future Concession
- Potential Bus Terminal Expansion
- Multi-use Trail & Bike Lockup Area
- Parking Area (Asphalt)
- Parking Area (Gravel)
- Future Parking Expansion Area (Gravel)
- Snow Storage
- Pedestrian Crossing
- Plan 1224335
- ATCO Pipeline ROW
- Utility ROW



| | |
|----------------|-----------------------|
| AE PROJECT No. | 2016-3726 |
| SCALE | N.T.S. |
| APPROVED | |
| DATE | 2017 MARCH |
| REV | |
| DESCRIPTION | ISSUED FOR DISCUSSION |

FIGURE No. 1
CAMPBELL PARK & RIDE
PROPOSED LAYOUT - INITIAL STAGE

DRAFT