

What We Heard Report

Exploring Disc Golf Options Public Engagement

March 2024



TABLE OF CONTENTS

Exploring Disc Golf Options Public Engagement	1
TABLE OF CONTENTS	1
OVERVIEW.....	2
ENGAGEMENT OPPORTUNITY	2
How your input will help make decisions	3
Engagement Demographics.....	3
SUMMARY OF FINDINGS.....	4
Overall Ranking of Disc Golf Sites	4
Disc Golf Site Feedback.....	4
Summary	8
NEXT STEPS:.....	8

OVERVIEW

The City of St. Albert is exploring proposed locations for a smaller, beginner-focused disc golf course featuring nine or fewer holes.

Public engagement is just one part of a process that continues to proceed through several stages of thoughtful analysis. Starting with the identification of City-owned park spaces that best suited the sport of disc golf. The criteria helped identify sites that could be suitable for a beginner-level disc golf course. Based upon the review, three sites were selected from 21 considered park locations. Those three parks were Napoleon Park, Deerbourne Park, and Langholm Park.

- Napoleon Park is found in the northwest of the North Ridge neighborhood and is 2.3 hectares. It has a playground and is designated as a dog off-leash area.
- Deerbourne Park is found in the northeast of the Deer Ridge neighborhood and is over three hectares. It has a playground, a tarmac area, and is a designated dog off-leash area.
- Langholm Park is found in the Lacombe Lake neighborhood on Liberton Drive. The park is just under three hectares, it has a playground, a sports field, and a ball diamond. A temporary disc golf course has existed at Langholm Park for over three years.

The City's goal is to identify suitable options for a beginner-focused disc golf course while ensuring the public has the opportunity to provide feedback on the proposed locations prior to making a decision. Your feedback along with considerations of budget, available space, and City policies will influence the decision-making process.

ENGAGEMENT OPPORTUNITY

An online survey was released through the City's Cultivate the Conversation website on March 12 and closed on April 4, 2024. The purpose of the survey was to seek the public's feedback on three potential locations for a beginner-focused disc golf course featuring nine or fewer holes.

A total of over 1,700 unique visitors viewed the project webpage, over 35,000 were reached through social media promotion of the survey, 175 respondents completed the survey, and 29 engaged with the map feature. The map feature included 43 pin placements.

We would like to thank everyone who participated and provided their feedback as the City Explores Disc Golf Options.

How your input will help make decisions

The public input gathered on the survey will contribute to the decision-making process as shown in Figure 1.

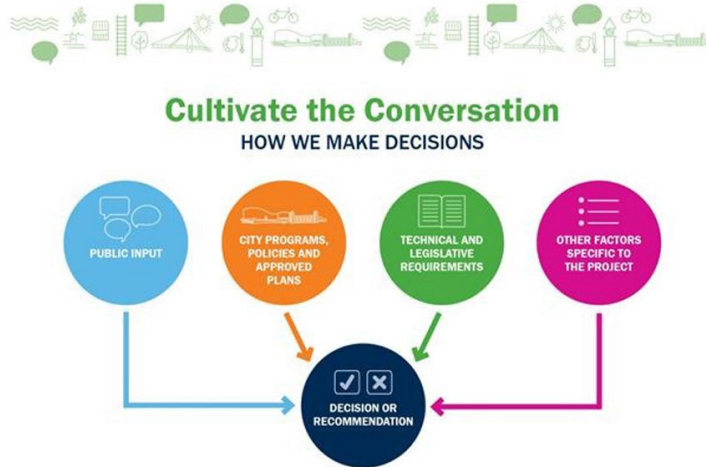


Figure 1 – How We Make Decisions

Engagement Demographics

The majority of respondents were from the three neighborhoods in which a site was located. During engagement, 28 per cent of the participants were from Deer Ridge, followed by 25 per cent from North Ridge, and 14 per cent from Lacombe Park.

Of those who responded to the survey, approximately 50% do not play disc golf. Of those who reported playing disc golf, the majority play a few times a year to a few times a month.

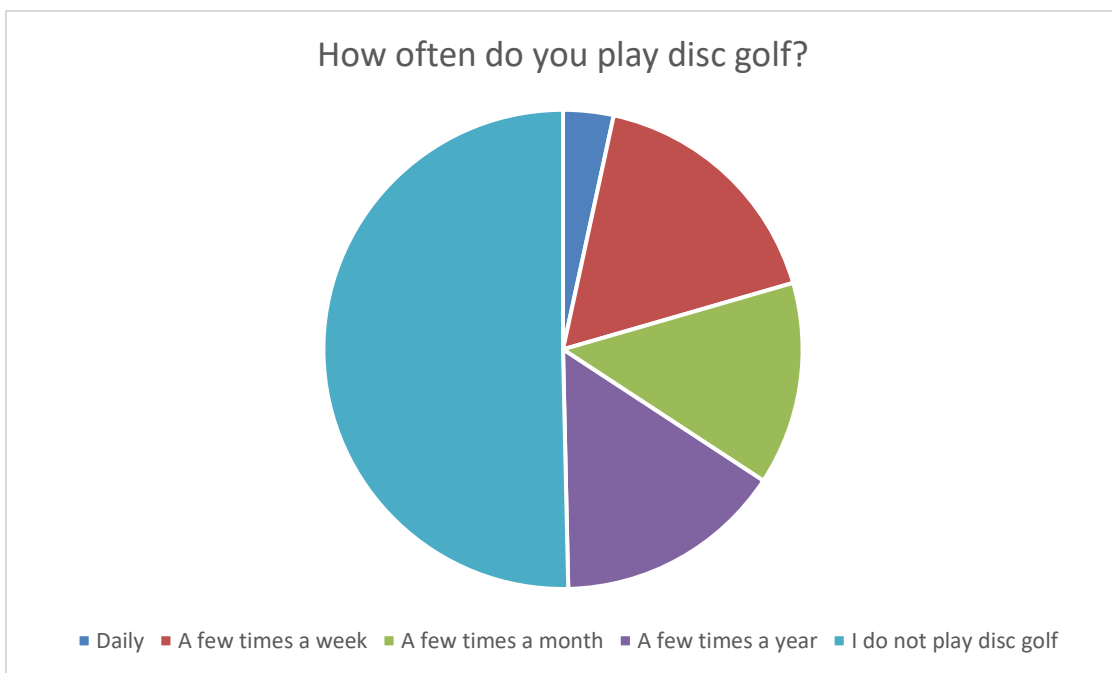


Figure 2 – How often do you play disc golf

SUMMARY OF FINDINGS

Overall Ranking of Disc Golf Sites

Participants were asked to rank the three sites, or no site at all, with one being the most preferred and four being the least preferred. Of the three sites and a do not support option, Langholm Park was identified as the most preferred site with, not support any site for a future disc golf course, as the least preferred option (Table 1 – Preferred site ranking for disc golf).

Park Site	Rank (1 highest – 5 lowest)
<i>Langholm Park</i>	1.50
<i>Deerbourne Park</i>	2.35
<i>Napoleon Park</i>	2.65
<i>I do not support any site ...</i>	2.93

Table 1 – Preferred site ranking for disc golf

Disc Golf Site Feedback

Participants were asked to provide feedback through an online survey or through an online map tool where geo-located comments could be placed. The survey asked participants about their activities at each of the sites, the individually foreseen impacts of disc golf at the site, and on their use. Participants were asked,

- What activities do you like to do while at (park name)?
- Do you think disc golf is an appropriate activity to add to the park?
- Do you think the addition of a disc golf course will have an impact on the activities you like to do in the park?

Napoleon Park

Napoleon Park is found in the northwest of the North Ridge neighborhood and is 2.3 hectares. It has a playground, and is designated as a dog off-leash area. The most frequently stated activities respondents identified using Napoleon Park for included:

- Dog walking or utilizing the dog off-leash area – 25 references
- Playground – 18 references
- Walking – 17 references
- Spontaneous use of the park – 15 references

Of the 161 responses, 28.6 per cent answered with disc golf being an appropriate activity for Napoleon Park (Table 3). Thirty-six per cent of 160 responses identified that the addition of disc golf would impact their activities at Napoleon Park (Table 4).

Do you think disc golf is an appropriate activity to add to Napoleon Park?

Yes	28.6%
No	36.6%
Unsure	34.8%

Table 3 – Disc golf appropriateness at Napoleon Park

Do you think the addition of a disc golf course will have an impact on the activities you like to do at Napoleon Park?

Yes	32.5%
No	35.6%
Unsure	31.9%

Table 4 – Disc golf impact to activities

Fifty-three comments were provided on how disc golf could impact their current activities at Napoleon Park. The most common concerns were:

- Dogs – 23 references
 - “I don’t see how disc golf and an off-leash dog park can co-exist.”
- Impact recreational activities – 12 references
 - “It will remove my ability to do most of those things [other recreational activities] effectively, unfortunately.”

Sixteen comments were left on the map feature for Napoleon Park with four supportive comments, two comments providing and/or seeking additional information, and 10 that do not support use of the park for disc golf. Of the comments submitted, the dog off-leash area and parking were the most noted concerns or inquiries for additional information among the map feature comments for Napoleon Park.

Deerbourne Park

Deerbourne Park is found in the northeast of the Deer Ridge neighborhood and is over three hectares. It has a playground, a tarmac area, and is a designated dog off-leash area. The most frequently stated activities respondents identified using Deerbourne Park for included:

- Dog walking or utilizing the dog off-leash area – 42 references
- Walking – 33 references
- Playground – 20 references
- Spontaneous use of the park – 18 references
- Skating – 17 references

Of the 172 responses, 43.6 per cent responded with disc golf being an appropriate activity for Deerbourne Park (Table 5) with 38.1 per cent of 168 responses evenly identifying disc golf would and would not impact their activities at Deerbourne Park (Table 6).

Do you think disc golf is an appropriate activity to add to Deerbourne Park?

Yes	43.6%
No	36.6%
Unsure	19.8%

Table 5 – Disc golf appropriateness at Deerbourne Park

Do you think the addition of a disc golf course will have an impact on the activities you like to do at Deerbourne Park?

Yes	38.1%
No	38.1%
Unsure	23.8%

Table 6 – Disc golf impact to activities

Seventy participants provided comment on how they felt the introduction of disc golf could impact their current activities at Deerbourne Park.

- Dogs – 27 references
 - “This is already an off-leash area and has the play park as well as the basketball area. I think this makes it busy to add disc golf.”
- Impact recreational activities – 22 references
 - “It might stop me from walking the paths in the park. It may stop me from walking my dog through the park.”
- Safety – 19 references
 - “The paths in the area and the playground could cause potential safety concerns depending on the course design.”
- Disc golf would be a new activity and an inviting new use – 15 references

- “Makes park more inviting. Disc golf being a new attraction.”

Fifteen comments were left on the map feature for Deerbourne Park with two supporting comments, two comments providing additional information, and 11 that do not support it. Of the comments submitted, the dog off-leash area and safety were noted.

Langholm Park

Langholm Park is found in the Lacombe Lake neighborhood on Liberton Drive. The park is just under three hectares with a playground, a sports field, and a ball diamond. A temporary disc golf course has existed at Langholm Park for over three years with 54.5 per cent of 160 responses indicating they have played at the temporary course at Langholm Park.

The most frequently stated activities respondents identified using Langholm Park for included:

- Disc Golf – 66 references
- Walking – 23 references

Of the 163 responses, 76.7 per cent responded with disc golf being an appropriate activity to continue at Langholm Park (Table 7) with 16 per cent of 162 responses identifying the permanent addition of disc golf does/could impact their activities at Langholm Park (Table 8).

Do you think disc golf is an appropriate activity to have at Langholm Park?

Yes	76.7%
No	7.4%
Unsure	16%

Table 7 – Disc golf appropriateness at Langholm Park

Do you think the addition of a disc golf course will have an impact on the activities you like to do at Langholm Park?

Yes	16%
No	66%
Unsure	18%

Table 8 – Disc golf impact to activities

Twenty-three participants provided comments on how disc golf would/does impact their activities at Langholm Park.

- Safety – eight references
 - “Fear of being hit with a disc.”
- Disc golf is a draw for the park and an inviting new use – eight references
 - “I had never used this park until there was disc golf. It’s a great location for

the activity, in an otherwise often unused space.”

Twelve comments were left on the map feature for Langholm Park with 11 supporting comments, one providing additional information, and zero comments that do not support the course. Of the comments submitted, enjoyment of the current course and four season use of the course were noted.

Summary

Currently, the City of St. Albert has two courses. The most recent and the only permanent course in St. Albert is located at Kingswood Park. Kingswood Park is an 18-hole community course that is seasonal. The second course began as a pilot program and has evolved from buckets in trees to disc golf baskets in the ground. Langholm is currently a nine-hole temporary course.

The feedback provided during the Exploring Disc Golf Options public engagement helped identify the preferred site for a beginner-level nine-hole or less disc golf course: **Langholm Park**.

Langholm Park was ranked highest amongst respondents with mainly positive comments about the current temporary course. However, a few comments also stated that disc golf at Langholm Park disrupts activities for area residents. If Langholm Park is supported as the location for a permanent nine-hole or less disc golf course, the design and configuration may be adjusted to improve safety and sightlines to ensure existing uses of the park site are minimally impacted. The beginner-level course would be nine holes or less and will be guided by best practices for disc golf course design and safety if moved forward.

NEXT STEPS:

The feedback provided by the community during the Exploring Disc Golf Options public engagement will be used to refine and provide recommendations to Council on where a beginner level nine-hole or less disc golf course could be located within St. Albert.

For more information, please visit <https://conversation.stalbert.ca/exploring-disc-golf-options>

If you have any questions regarding the development of this summary, please contact Benjamin Jonah, Park Planning Specialist, at bjonah@stalbert.ca.